



SURFACE-MOUNT POWER INDUCTORS FASNR6020,6028 SERIES

FEATURES:

Low profile, low RDC, high current handling capacities
Magnetically shielded structure that ensures the high-density mounting configurations
Provided in embossed carrier tape packaging for use with automatic mounting machines

OPTIONS:

Ideally used in Portable telephones, PDA, DSC
DC-DC converters, etc

COMMON APPLICATIONS:

$\frac{SNR}{a} \frac{3010}{b} \frac{1R0}{c} \frac{N}{d}$
a: Series name
b: Product dimensions
c: Inductance Value [1R0:1.0uH; 100; 10uH; 101:100uH]
d: Inductance Tolerance [K:10%; M:20%; N:30%]

ELECTRICAL CHARACTERISTICS

Part Number	Inductance [uH]	DCR [mΩ] Max	Isat [A]
FASNR6020-1R0N	1.0	28	4.27
FASNR6020-1R5N	1.5	35	4.20
FASNR6020-2R2N	2.2	45	3.20
FASNR6020-3R3N	3.3	46	3.15
FASNR6020-4R7N	4.7	90	2.80
FASNR6020-6R8N	6.8	140	2.20
FASNR6020-100M	10	175	185
FASNR6020-120M	12	190	1.70
FASNR6020-150M	15	200	1.35
FASNR6020-220M	22	280	1.29
FASNR6020-330M	33	400	1.00
FASNR6020-470M	47	650	0.90
FASNR6020-680M	68	950	0.65
FASNR6020-101M	100	1430	0.50

Part Number	Inductance [uH]	DCR [mΩ] Max	Isat [A]
FASNR6028-1R0N	1.0	20	5.75
FASNR6028-1R5N	1.5	25	5.25
FASNR6028-2R2M	2.2	28	5.10
FASNR6028-3R3M	3.3	40	3.80
FASNR6028-4R7M	4.7	45	3.70
FASNR6028-5R6M	5.6	60	3.15
FASNR6028-6R8M	6.8	65	3.00
FASNR6028-100M	10	85	2.50
FASNR6028-120M	12	96	2.00
FASNR6028-150M	15	125	2.00
FASNR6028-220M	22	185	1.45
FASNR6028-270M	27	210	1.50
FASNR6028-330M	33	260	1.20
FASNR6028-470M	47	410	1.15
FASNR6028-560M	56	420	0.85
FASNR6028-680M	68	546	0.85
FASNR6028-20M	82	680	0.80
FASNR6028-101M	100	750	0.750
FASNR6028-151M	150	860	0.50
FASNR6028-331M	330	2400	0.27
FASNR6028-471M	470	3500	0.23
FASNR6028-102M	1000	7800	0.20

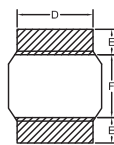
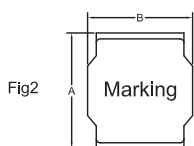
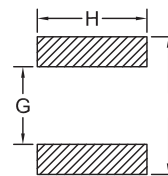
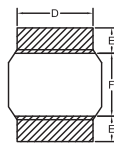
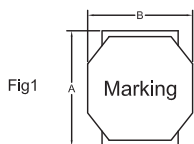
TEST CONDITIONS

L = 82uH TEST FREQUENCY AT 100KHz/0.25V.

L > 82uH TEST FREQUENCY AT 1KHz/0.25V.

TECHNICAL INFORMATION

PHYSICAL CHARACTERISTICS



DIMENSIONS IN mm

Part number	A	B	C	D	E	F	G	H	I	FIG
FASNR6020	6.0±0.2	6.0±0.2	2.0 Max	5.0 REF	1.65 REF	2.7 REF	6.5 REF	5.3 REF	2.4 REF	1
FASNR6028	6.0±0.2	6.0±0.2	3.0 Max	5.0 REF	1.85 REF	2.3 REF	6.5 REF	5.3 REF	2.0 REF	2