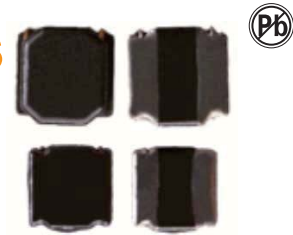


SURFACE-MOUNT POWER INDUCTORS FASNR4020,4026 SERIES



FEATURES:

Low profile, low RDC, high current handling capacities
Magnetically shielded structure that ensures the high-density mounting configurations
Provided in embossed carrier tape packaging for use with automatic mounting machines

OPTIONS:

Ideally used in Portable telephones, PDA, DSC
DC-DCC converters, etc

COMMON APPLICATIONS:

SNR $\frac{3010}{a}$ $\frac{1R0}{c}$ $\frac{N}{d}$

a: Series name

b: Product dimensions

c: Inductance Value [1R0: 1.0uH; 100; 10uH; 101: 100uH]

d: Inductance Tolerance [K: 10%; M: 20%; N: 30%]

ELECTRICAL CHARACTERISTICS

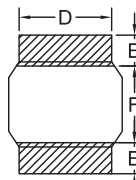
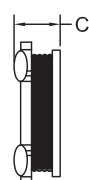
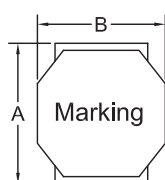
Part Number	Inductance [uH]	DCR [mΩ] Max	Isat [A]	Part Number	Inductance [uH]	DCR [mΩ] Max	Isat [A]
FASNR4020-1R0N	1.0	41.8	4.78	FASNR4026-1R0N	1.0	45	3.30
FASNR4020-1R5N	1.5	50.6	4.45	FASNR4026-2R2N	2.2	60	2.90
FASNR4020-2R2N	2.2	54.6	3.40	FASNR4026-3R3N	3.3	88	2.50
FASNR4020-3R3N	3.3	95.8	3.20	FASNR4026-4R7N	4.7	128	2.25
FASNR4020-4R7N	4.7	102.9	2.35	FASNR4026-6R8N	6.8	145	1.90
FASNR4020-6R8N	6.8	171.2	2.15	FASNR4026-8R2N	8.2	160	1.75
FASNR4020-100M	10	225	1.60	FASNR4026-100M	10	180	1.65
FASNR4020-150M	15	314	1.35	FASNR4026-150M	15	300	1.55
FASNR4020-220M	22	477	1.05	FASNR4026-220M	22	330	1.40
FASNR4020-330M	33	750	0.85	FASNR4026-330M	33	482	1.20
FASNR4020-470M	47	969	0.74	FASNR4026-470M	47	950	1.00
FASNR4020-680M	68	1449	0.61	FASNR4026-680M	68	1300	0.80
FASNR4020-820M	82	1596	0.50				
FASNR4020-101M	100	2210	0.46				

TEST CONDITIONS

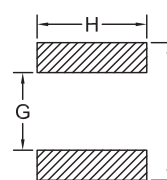
L = 8.2uH TEST FREQUENCY AT 100KHz/0.25V.

L > 8.2uH TEST FREQUENCY AT 1KHz/0.25V.

TECHNICAL INFORMATION



PHYSICAL CHARACTERISTICS



DIMENSIONS IN mm

Part number	A	B	C	D	E	F	G	H	I
FASNR4020	4.0±0.2	4.0±0.2	2.1 Max	3.5 REF	1.2 REF	1.6 REF	4.5 REF	3.8 REF	1.3 REF
FASNR4026	4.0±0.2	4.0±0.2	2.6 Max	3.5 REF	1.2 REF	1.6 REF	4.5 REF	3.8 REF	1.3 REF