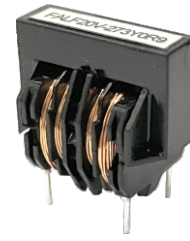


# FALF20V SERIES FRAME CORE CHOKES FOR POWER LINES



## ELECTRICAL SPECIFICATIONS:

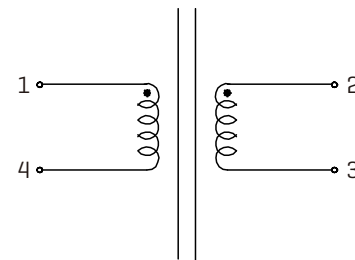
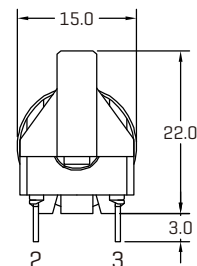
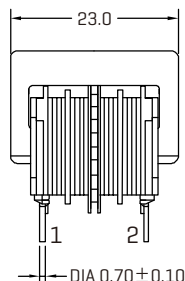
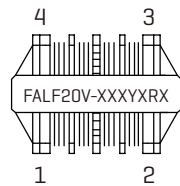
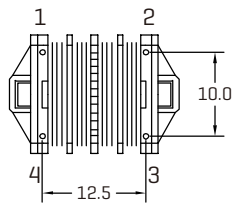
- Rated Voltage 250 VAC.
- Rated Current 0.35 A to 2.20 A.
- Turns Ratio: N1:N2=1:1±2%.
- Hi-pot: 2000VAC/1mA/2Second.
- Test Frequency Response: 10KHz/100mV.
- Operating Temperature Range: -40°C to +105°C.
- Inductance Tolerance: +50%/-30% at 25°C.
- All Parts Meet Rohs Compliance.
- Weight: Approximately 10.5g.

## ELECTRICAL CHARACTERISTICS AT 25°C

Part Number	Inductance [mH] +50%/-30%	Lstray [uH] Typ	D.C.Resistance [mohms] Typ	Rated Current (V) Typ
FALF20V-104Y0R35	100	1000	4500	0.35
FALF20V-683Y0R4	68	680	3000	0.40
FALF20V-473Y0R5	47	470	2000	0.50
FALF20V-393Y0R6	39	390	1500	0.60
FALF20V-273Y0R7	27	270	1000	0.70
FALF20V-223Y0R8	22	220	800	0.80
FALF20V-153Y0R9	15	150	600	0.90
FALF20V-103Y1R1	10	100	400	1.10
FALF20V-682Y1R3	6.8	70	280	1.30
FALF20V-332Y1R8	3.3	33	140	1.80

Part Number	Inductance [mH] +50%/-30%	Lstray [uH] Typ	D.C.Resistance [mohms] Typ	Rated Current (A) Typ
FALF20V-104Y0R4	100	850	3000	0.40
FALF20V-683Y0R5	68	600	2000	0.50
FALF20V-473Y0R6	47	400	1400	0.60
FALF20V-393Y0R7	39	330	1100	0.70
FALF20V-273Y0R9	27	230	750	0.90
FALF20V-223Y1R0	22	165	580	1.00
FALF20V-153Y1R1	15	125	440	1.10
FALF20V-103Y1R4	10	85	300	1.40
FALF20V-682Y1R7	6.8	55	190	1.70
FALF20V-332Y2R2	3.3	27	110	2.20

## TECHNICAL INFORMATION



Dimensions in mm  
Tolerance: .X ±0.50  
.XX ±0.25